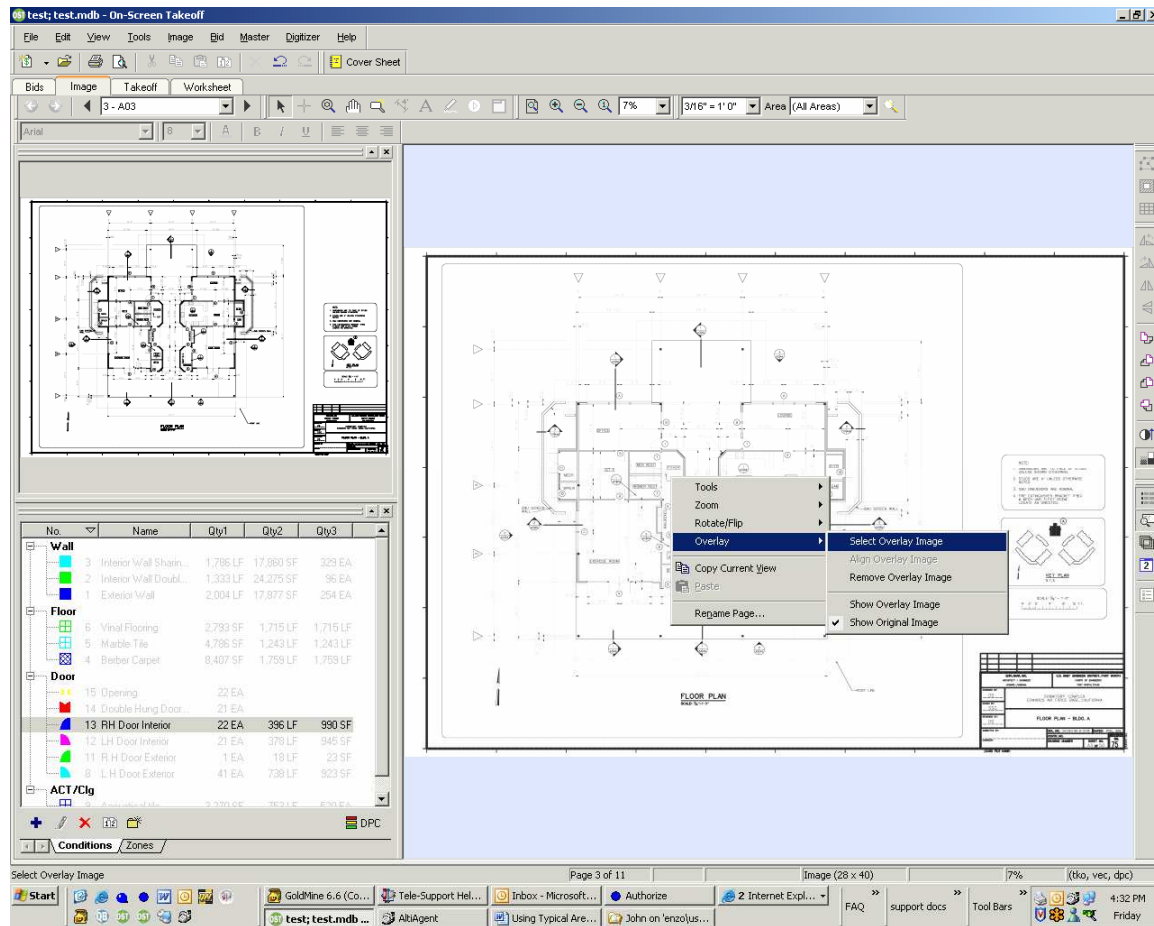
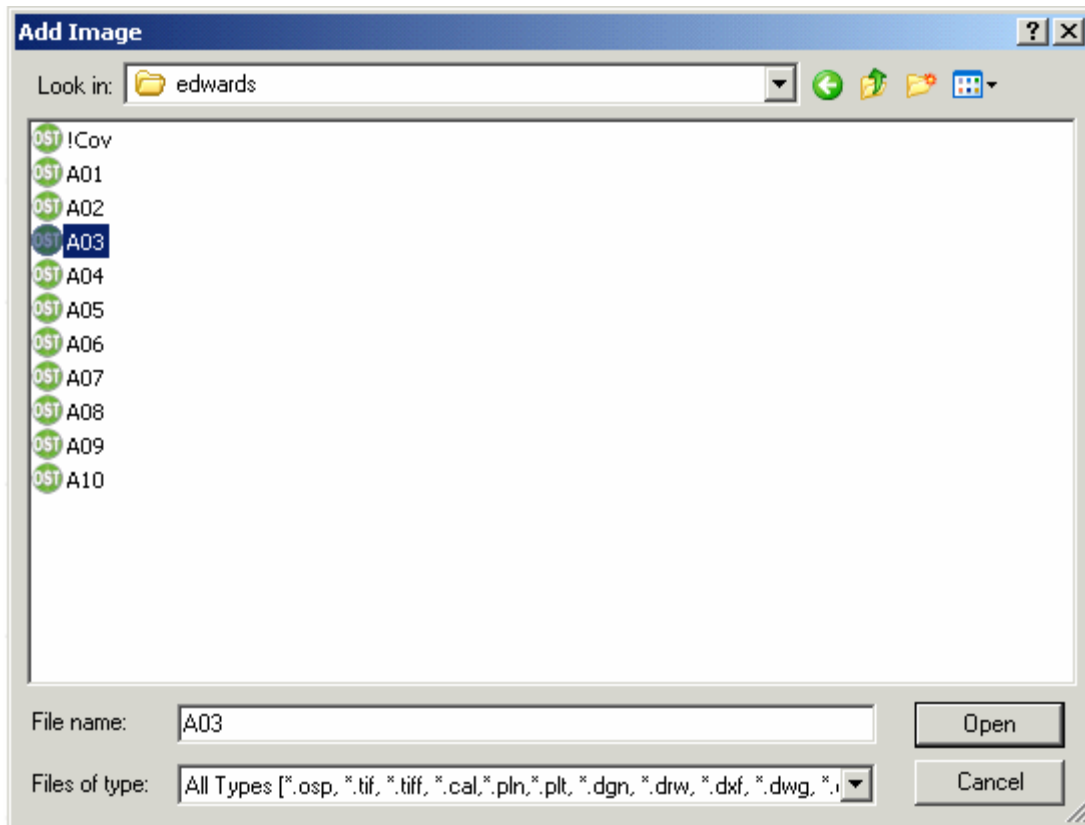


Using Overlays

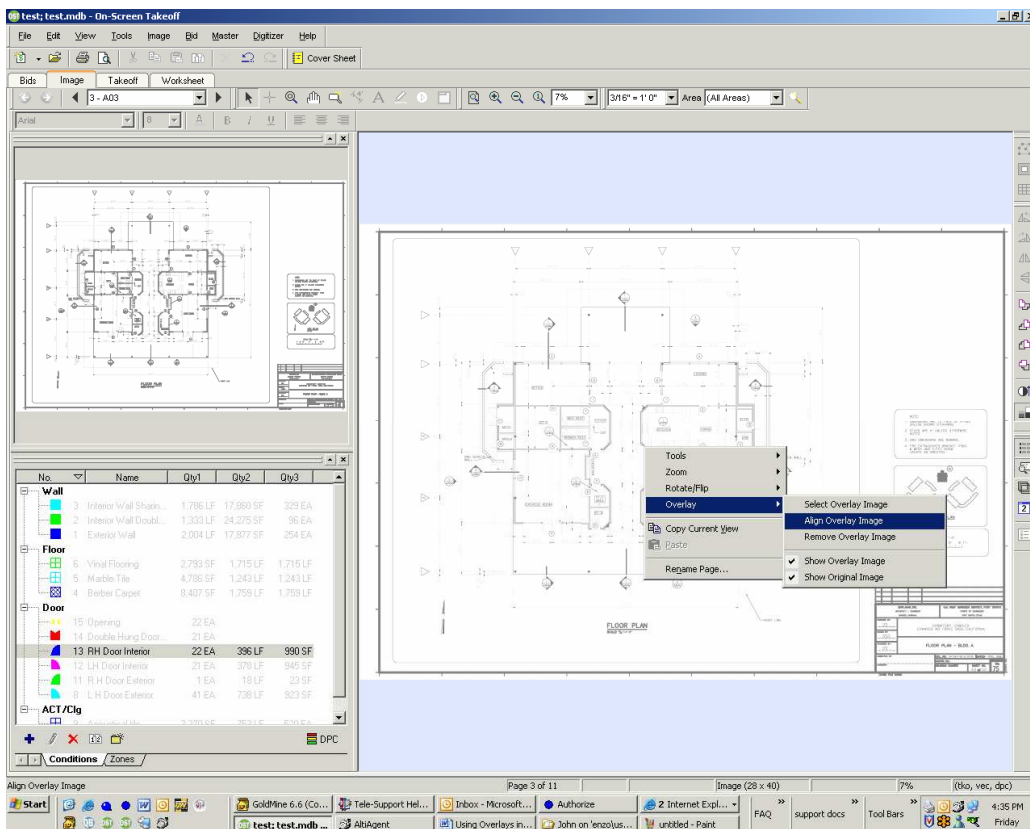
To use an Overlay in On Screen Takeoff 3.0 we need two things, the original image that is loaded, and the addendum to Overlay on top of the older drawing. The addendum or Overlay must be the exact same size and resolution as the original image, or it will not line up correctly. On Screen Takeoff cannot resize an image, so if the Overlay is off even by an inch, the two files will not line up properly. Usually you may ask the source of the addendum to resend you a copy that is the right size.

Once you have an image loaded in the Bid go to the Image Tab and navigate to that page. Right click anywhere on the image and select Overlay, then Select Overlay Image.

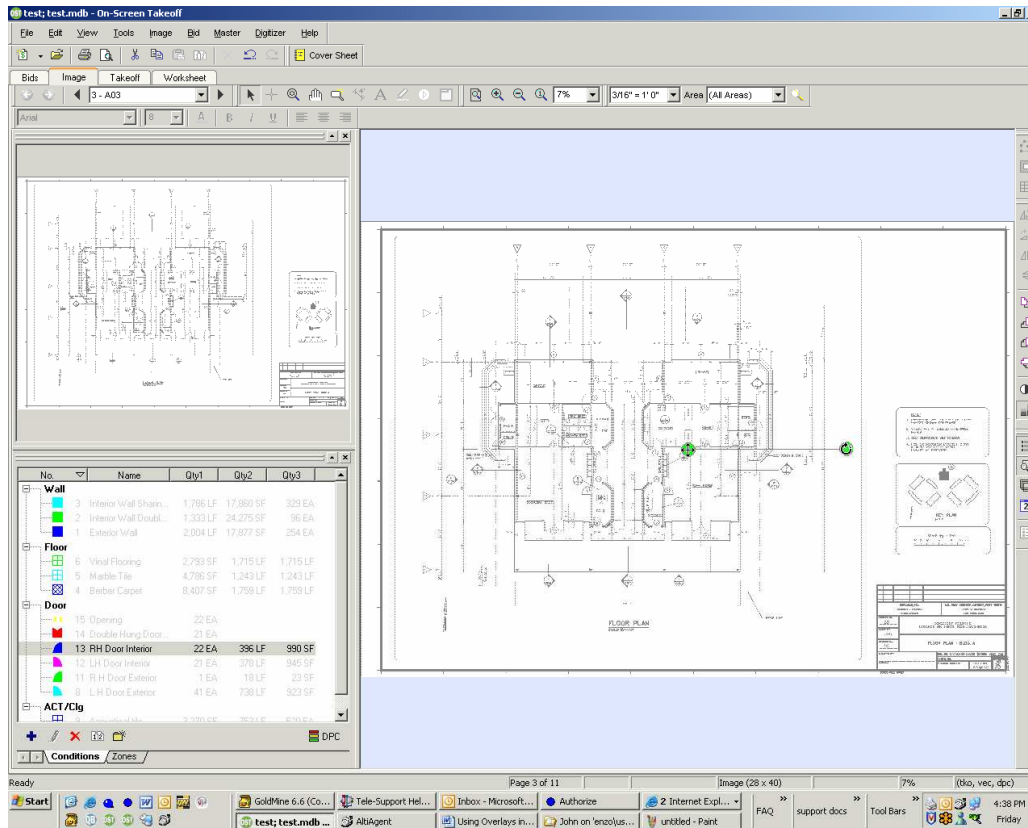




Now find where the Overlay is located on your disk and select it.

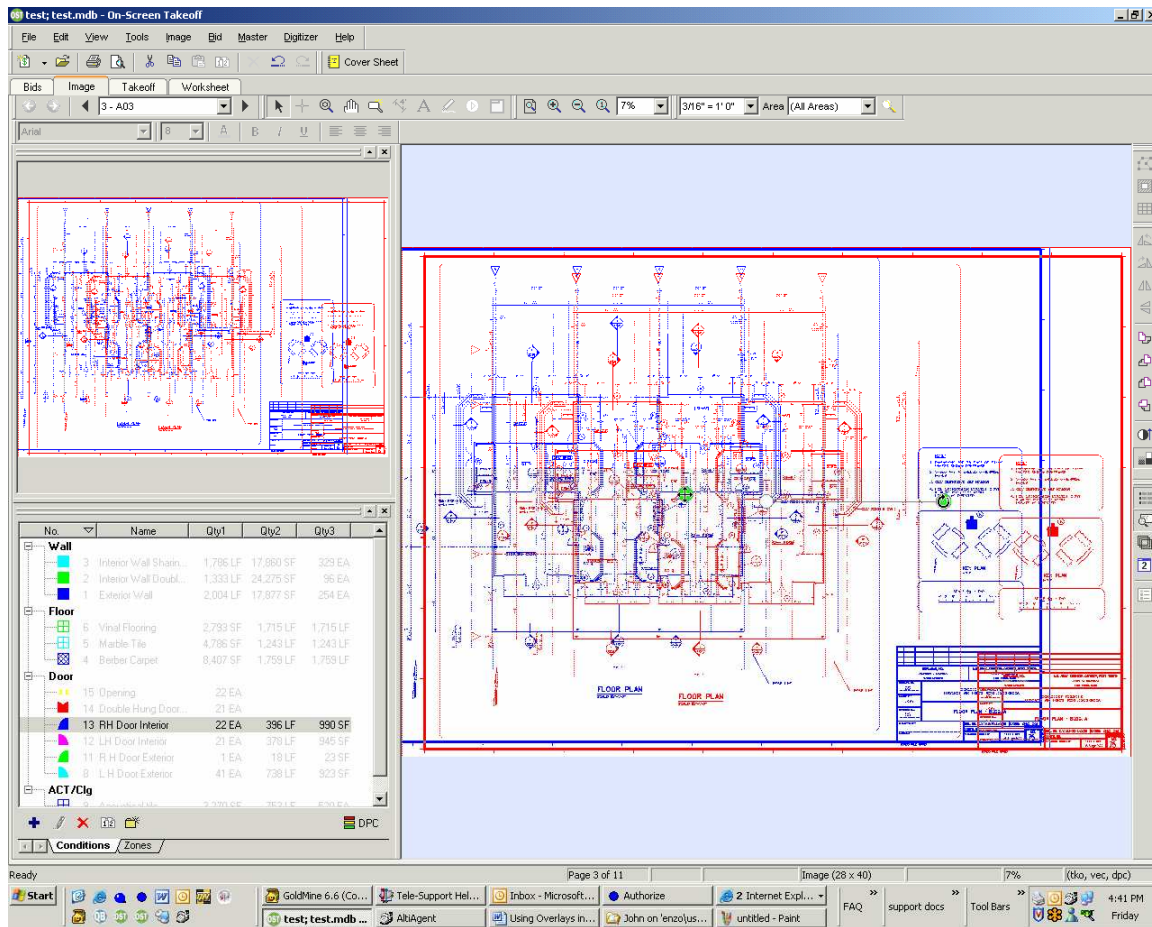


Once the Overlay is loaded, Right click anywhere on the image and select Overlay, then Align Overlay Image.



A line with two green circles on each end will appear. The left circle controls the linear alignment, while the right circle controls the rotation.

You can use the mouse or cursor keys to align the Overlay. Anything in Red is in the original image only (a deletion), while anything in Blue is in the Overlay image only (an addition). In this example there are no changes so everything looks gray, but if I were to move the Overlay to the left, you can see the original image in Red and the Overlay in Blue.



Now that you can tell which information has been changed you can adjust your takeoff accordingly for all deletions (red) and additions (blue).