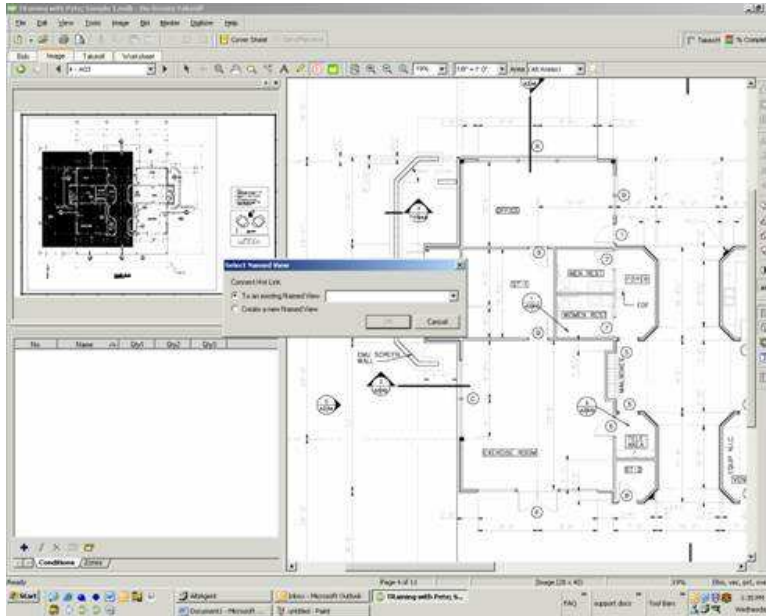


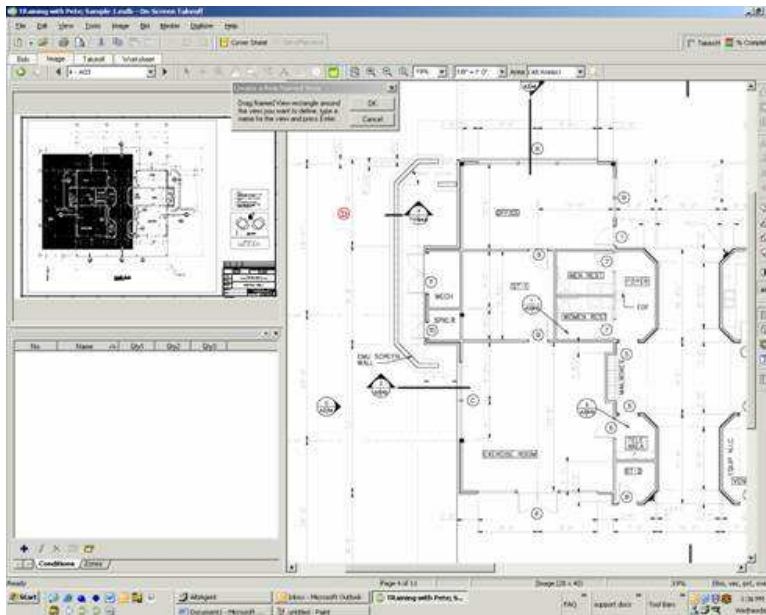
Hot Links and Named Views

There are two ways to use the Hot Links feature in OST 3.0. In this version Hot Links are used with Named Views so we will have to define our Named Views before we start or as we go.

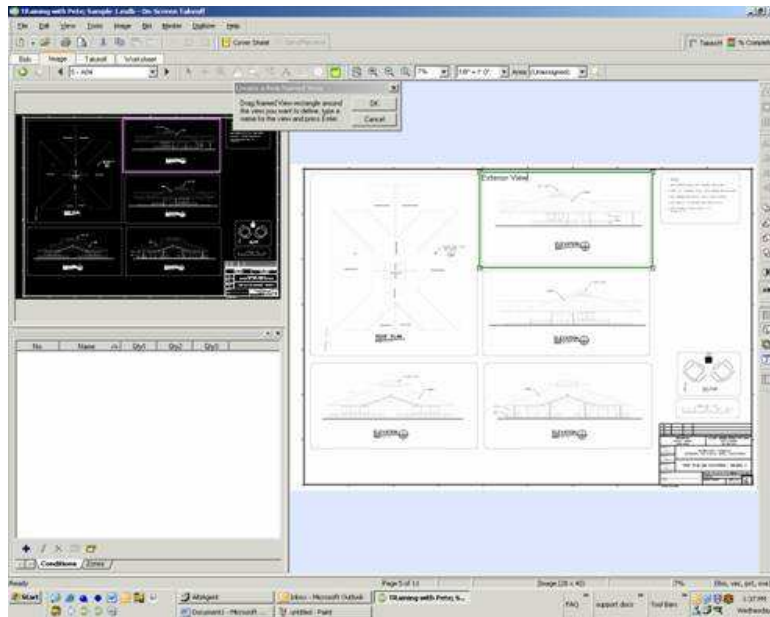
First click on the Hot Link button and find an area on the plan to place a Hot Link. When you click on the plan a second pop up window will come up and ask you to link it to an existing Named View or to create a new one. To create a new named view, choose the second option and click OK.



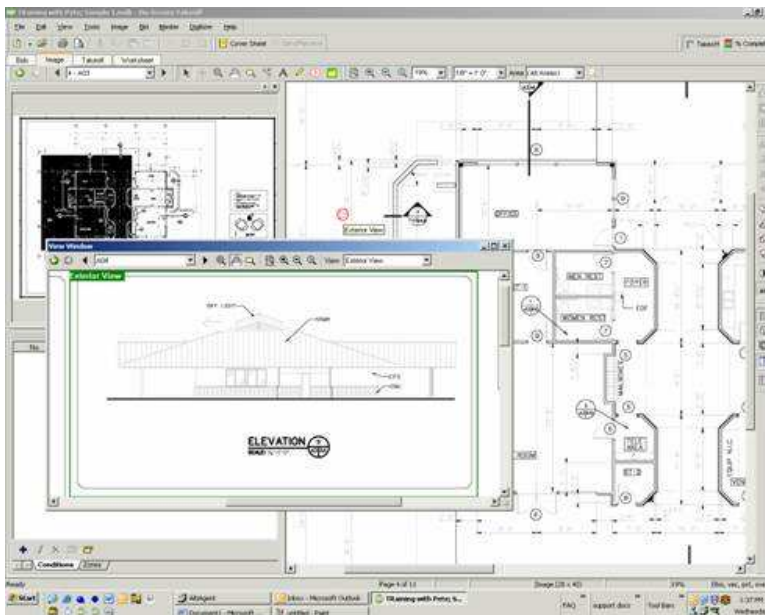
Now the program will ask you to drag a window around the Named View and type in a name for it and press enter.



Navigate to the page where you need the Named View and drag the rectangle to create it.



Now when you click on the Hot Link it should go to this Named View.



You also have the option of creating all of your Named Views in a set of plans first, then defining the Hot Links accordingly.

